



**MANHATTAN**

MANHATTAN CORPORATION LIMITED

---

**QUARTERLY REPORT**  
PERIOD ENDED 30 JUNE 2009

---

**JUNE 2009 QUARTER  
HIGHLIGHTS**

- ***Manhattan merger approved by shareholders on 20 July 2009***
- ***Alan Eggers heads Manhattan as executive chairman***
- ***Company now well funded with over \$9.5 million in cash and listed investments in uranium companies***
- ***Key Australian and international resource funds now backing Manhattan***
- ***Maiden JORC resource for Double 8 uranium deposit in WA announced***
- ***Double 8 has a JORC reported inferred resource of 10.9Mlb uranium oxide***
- ***Double 8 has an additional JORC reported mineralisation potential of 6.6Mlb to 15.4Mlb uranium oxide***
- ***Drilling Double 8 uranium deposit in WA a priority***
- ***Further exploration drilling upside at Double 8 and along the palaeochannels at Ponton***
- ***Experienced management team to pursue growth through mergers and acquisitions***
- ***Project interests rationalised with Manhattan now holding 100% interest in the Ponton and Gardner Range projects, 90% of the Siccus Project and divesting of its interest in the Anketell project***
- ***SPOT MARKET URANIUM OXIDE NOW US\$49 POUND***

**MANHATTAN CORPORATION LIMITED**

ABN 61 123 156 089

**QUARTERLY REPORT FOR THE PERIOD ENDING 30 JUNE 2009****SUMMARY**

Manhattan Corporation Limited (“**Manhattan**”) completed the merger with Manhattan Resources Pty Ltd on 20 July 2009.

The Company has emerged as a well funded uranium company with a significant uranium oxide resource of 10.9Mlb and a further drilled potential of 6.6Mlb to 15.4Mlb already reported for the Double 8 deposit in Western Australia. There remains substantial exploration upside yet to be drill tested at Double 8 that will expand on this resource base.

Manhattan’s strategy for growth is to expand the resource and advance the Double 8 uranium deposit to mine development stage and by merger and acquisitions to acquire additional quality uranium resources that can be developed into producing mines in the near term.

Manhattan has an experienced management team that has previously built one of Australia’s premier uranium companies to an ASX Top 200 company.

Manhattan’s Executive Chairman, Alan Eggers, has a long and well credentialed track record in the Australian and international uranium industry and was the founding director, substantial shareholder and Managing Director of Summit Resources Limited, a uranium company that had a market capitalisation of \$1.2 billion at the time it was taken over by Paladin Energy Ltd in May 2007. Mr Eggers was also a founding director of the Australian Uranium Association.

The Company’s new board includes Chairman Alan Eggers; Managing Director Robert Wrixon, a former Xstrata executive; John Seton, an Auckland based solicitor and the former chairman of Summit and chairman and director of a number of ASX and NZX listed companies, and West Perth law firm Blakiston & Crabb senior partner Marcello Cardaci.

The Company is well funded to achieve its medium term objectives with over \$9.5 million in cash and investments in ASX listed uranium companies. Manhattan has around \$2.5 million in bank cash deposits and \$7.1 million in investments in liquid ASX listed uranium companies.

Following the merger Manhattan now has 83.48 million shares on issue. The Company also has 9.85 million unlisted options on issue with a strike price of 20 cents, 5.55 million at 60 cents and 5.55 million at \$1.00.

The Company is focused on advancing its key uranium project at Ponton, expanding and upgrading the confidence levels of the reported resource and presenting these results clearly to Australian and international investors. In addition, by utilising the extensive database Manhattan has developed, corporate opportunities already identified to acquire quality uranium resources and grow the company will also be undertaken to generate shareholder wealth.

Agreements were reached during the quarter with Deep Yellow Ltd to discharge all remaining debt owed, to acquire their 30% interests in the Ponton North and Gardner Range projects in Western Australia (“WA”) and their 20% interest in the Siccus project in the Frome Basin of South Australia (“SA”). As well, the Company divested its entire interest in the Anketell applications in WA to Deep Yellow Ltd.

Importantly, Manhattan’s activities have recently attracted the attention of key Australian and international resource and specialist uranium funds in Sydney, Hong Kong and London and resulted in them taking up significant positions on the Company’s share register.

## JUNE QUARTER 2009

### REVIEW OF OPERATIONS

#### 1. PONTON PROJECT (WA)

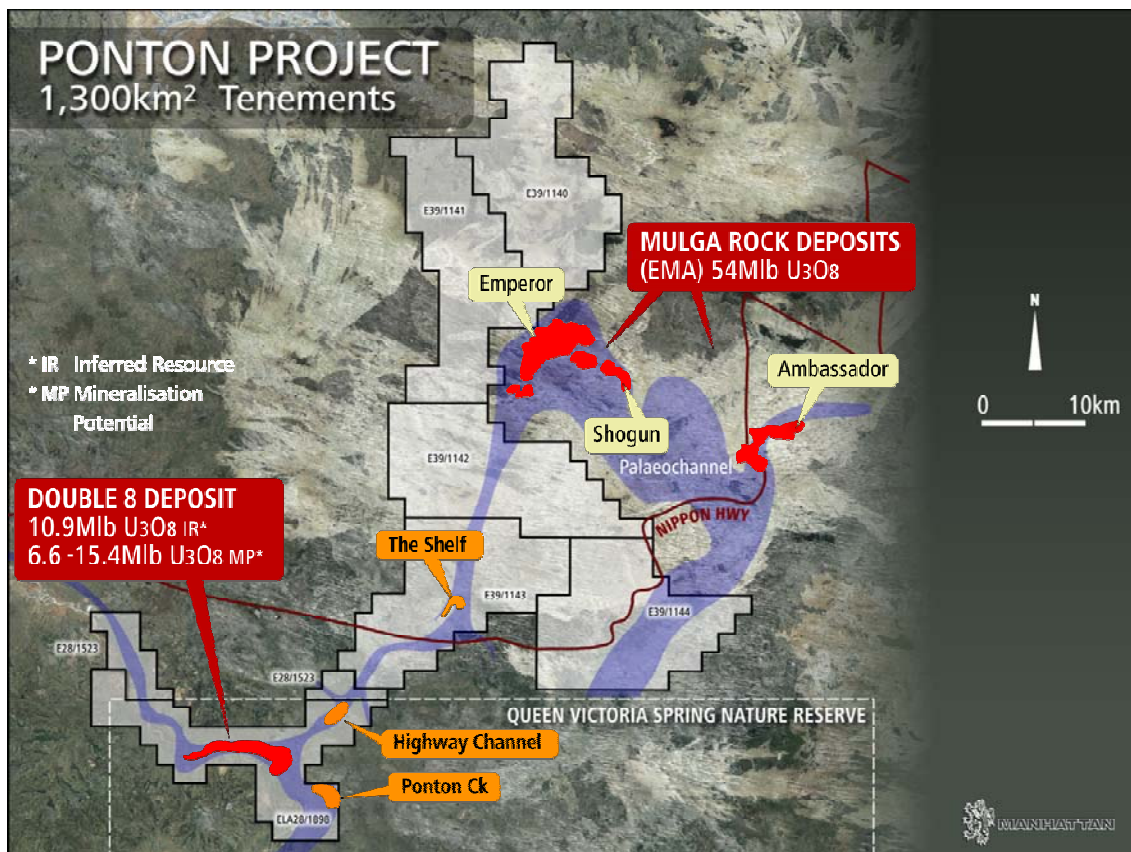
**Interest: Manhattan 100%**

**Operator: Manhattan Resources Pty Ltd**

Manhattan's Ponton project is located approximately 200km east-northeast of Kalgoorlie on the edge of the Great Victoria Desert in WA. The Company holds around 1,300km<sup>2</sup> of applications and granted exploration tenements underlain by Tertiary palaeochannels within the Gunbarrel Basin that are known to host a number of uranium deposits and drilled uranium anomalies.

The Ponton system of palaeochannels hosts the 11Mlb Double 8 uranium deposit as well as the known drilled uranium anomalies at Ponton Creek, Highway Channel and Shelf in Manhattan's tenements. These palaeochannels connect with the lignite hosted Mulga Rock uranium deposits where Energy and Minerals Australia has recently released an initial inferred resource estimate of 24,520 tonnes (54Mlb) U<sub>3</sub>O<sub>8</sub> (see Figure 1).

**Figure 1: Ponton Project (WA)**



Manhattan's Double 8 uranium deposit is located in tenement application E28/1898 in the southwest of the project area within the Queen Victoria Spring Nature Reserve.

Drilling by PNC within the Queen Victoria Spring Nature Reserve in 1983 discovered sandstone hosted uranium mineralisation at the Double 8 prospect. Additional drilling within the palaeochannel system identified the Ponton Creek, Highway Channel and Shelf Prospects. Approximately 100 holes were drilled and radiometric gamma logged in the Nature Reserve between 1983 and 1986, of which 44 were in the Double 8 area.

The Double 8 deposit is sandstone hosted tabular type uranium body in the lower parts of the palaeodrainage system (40-70m depth) in reduced sands potentially amenable to in-situ leach recovery ("ISL"). The Shelf anomaly is lignite hosted similar to the Mulga Rock deposits. The Double 8 uranium mineralisation was drill intersected along approximately nine kilometres of palaeodrainage, at widths of approximately 500m on average, with downhole thicknesses of 3 to 25 meters.

Manhattan completed 74 holes for 4,630 metres of reconnaissance drilling along the palaeochannels in its granted exploration tenements, to the north of the Queen Victoria Springs Nature Reserve, in September 2008.

## 2. DOUBLE 8 URANIUM DEPOSIT (WA)

**Interest: Manhattan 100%**

**Operator: Manhattan Resources Pty Ltd**

On 5 May 2009 Manhattan reported a maiden Inferred Resource Estimate for the Double 8 uranium deposit at Ponton in Western Australia of 16Mt at 310ppm uranium oxide ("U<sub>3</sub>O<sub>8</sub>") containing 10.9Mlb U<sub>3</sub>O<sub>8</sub> at a 200ppm cutoff. In addition, the Exploration Results reported identified further Mineralisation Potential at Double 8 of between 6.6 and 15.4Mlb of U<sub>3</sub>O<sub>8</sub> at the 200ppm cutoff.

The reported resource and mineralised potential, based on PNC's drilling in the 1980's are summarised as follows:

<b>DOUBLE 8 INFERRED RESOURCE ESTIMATES</b>				
<b>CUTOFF GRADE eU<sub>3</sub>O<sub>8</sub>(ppm)</b>	<b>TONNES (MILLION)</b>	<b>GRADE eU<sub>3</sub>O<sub>8</sub> (ppm)</b>	<b>TONNES U<sub>3</sub>O<sub>8</sub> (t)</b>	<b>POUNDS (MILLION) U<sub>3</sub>O<sub>8</sub> (Mlb)</b>
100	59	180	10,620	23.4
150	28	250	7,000	15.4
200	16	310	4,960	10.9
250	9	370	3,330	7.3
300	6	410	2,460	5.4
350	4	450	1,800	4.0
400	3	490	1,470	3.2

<b>DOUBLE 8 ADDITIONAL MINERALISED POTENTIAL</b>				
<b>CUTOFF GRADE eU<sub>3</sub>O<sub>8</sub>(ppm)</b>	<b>TONNAGE RANGE (MILLION)</b>	<b>GRADE RANGE eU<sub>3</sub>O<sub>8</sub> (ppm)</b>	<b>TONNAGE RANGE U<sub>3</sub>O<sub>8</sub> (t)</b>	<b>POUNDS RANGE (MILLION) U<sub>3</sub>O<sub>8</sub> (Mlb)</b>
100	40 - 80	100 - 200	4,000 - 16,000	8.8 - 35.3
150	20 - 40	200 - 250	4,000 - 10,000	8.8 - 22.0
200	10 - 20	300 - 350	3,000 - 7,000	6.6 - 15.4
250	5 - 10	350 - 400	1,750 - 4,000	3.9 - 8.8
300	3 - 5	400 - 450	1,200 - 2,250	2.6 - 5.0
350	2 - 3	450 - 550	900 - 1,650	2.0 - 3.6
400	1 - 2	550 - 600	550 - 1,200	1.2 - 2.6

The Double 8 uranium deposit of 10.9Mlb U<sub>3</sub>O<sub>8</sub> is a significant resource and already places the deposit as the twenty-second largest reported uranium resource in Australia and the ninth largest in Western Australia.

The fact that the uranium mineralisation at Double 8 remains open and is yet to be closed off by drilling along with the additional Mineralisation Potential reported of between 10 and 20 million tonnes with a grade range between 300 to 350ppm eU<sub>3</sub>O<sub>8</sub> indicates that there is considerable exploration upside for the Double 8 deposit.

The Company considers that with further exploration, drilling and sampling at Double 8, and along the Ponton palaeochannels, the resource estimates will expand and the confidence levels of these estimates will improve and report to higher categories under the JORC (2004) Code.

Our priority is now to obtain the grant of E28/1898 at Ponton and gain exploration access to the area to enable the recommencement of drill testing and evaluation of the uranium resources identified at Double 8 and to further test the uranium anomalies identified from earlier work.

### 3. **SICCUS PROJECT (SA)**

**Interest: Manhattan 90%**  
**Operator: Manhattan Resources Pty Ltd**

The Siccus project covers part of the Tertiary palaeochannel system in the Frome Basin of SA. Manhattan's exploration licence covers an area of 672km<sup>2</sup> of this highly prospective uranium province. The target at Siccus is sandstone hosted uranium mineralisation, similar to the nearby deposits at Beverley, Four Mile and Honeymoon. Drilling by the Company in 2008 intersected both the Namba and Eyre Formations, the sediments that host the Frome Basin uranium mines and deposits. As well, historic radiometric anomalies of 14 times background were recorded in the Namba clays. Planned follow up drilling will test for uranium mineralisation within the prospective sediments on the eastern side of the Siccus palaeochannel.

During the quarter Manhattan acquired Deep Yellow Ltd's 20% interest in the Siccus project tenements. Signature Resources NL holds a 10% carried interest in the project area.

### 4. **GARDNER RANGE PROJECT (WA)**

**Interest: Manhattan 100%**  
**Operator: Manhattan Resources Pty Ltd**

The Gardner Range project is located in the Tanami region of WA. Here the Company holds four granted exploration licences that border the NT and cover 542km<sup>2</sup>. The target is Athabasca Basin style unconformity related uranium mineralisation. Historic drilling at the Don uranium prospect, in Manhattan's tenement, intersected 0.44m of 1.5% U<sub>3</sub>O<sub>8</sub> and 1.7g/t gold at a depth of 40m in graphitic shale on the unconformity.

Recent airborne geophysical surveys have identified significant uranium channel anomalies (including at the Don) that are coincident with zones of illite clay alteration often associated with hydrothermal mineralising events. In addition, a VTEM survey located a conductive unit directly below the Don prospect, further supporting the unconformity model for the uranium mineralisation in the area and delineating a number of new drill targets.

During the quarter Manhattan acquired Deep Yellow Ltd's 30% interest in the Gardner Range project tenements.

### 5. **ANKETELL PROJECT (WA)**

**Interest: Manhattan 0%**

As part of the review and rationalisation of Manhattan's projects during the last quarter the Company divested of its entire interest in the Anketell project to Deep Yellow Ltd.

## **ACQUISITIONS AND GENERATIVE**

Over the last few months the Company has focused on its projects, balance sheet, share register and funding needs to create shareholder wealth going forward. Manhattan has now emerged with a substantial uranium resource and exploration potential at Ponton in WA, debt free with a stable share register.

The Company is now focused on advancing its key uranium project at Double 8, expanding and upgrading the confidence levels of the reported resource and presenting these results clearly to Australian and international investors. In addition, by utilising the extensive database Manhattan has developed, corporate opportunities already identified to acquire quality uranium resources and grow the company will also be undertaken to generate shareholder wealth.

**ALAN J EGGERS**  
**Executive Chairman**  
**30 July 2009**

- **COMPETENT PERSON'S STATEMENT**

*The information in this report that relates to reported Exploration Results, Mineral Resources or Ore Reserves is based on information compiled by Alan J Eggers who is a Corporate Member of the Australasian Institute of Mining and Metallurgy and is an executive director of the Company. Alan J Eggers is a professional geologist and has sufficient experience that is relevant to the style of mineralisation and type of deposits under consideration and to the activity which he is undertaking to qualify as a Competent Person as defined in the 2004 Edition of the "Australasian Code for Reporting of Exploration Results, Mineral Resources and Ore Reserves" Mr Eggers consents to the inclusion in this report of the matters based on his information in the form and context in which it appears.*

**For further information, please contact Mr Alan J Eggers at:**

**MANHATTAN CORPORATION LIMITED**

Ground Floor  
15 Rheola Street  
West Perth WA 6005

Telephone: **+61 8 9322 6677**  
Facsimile: **+61 8 9322 1961**  
Email: [info@manhattancorp.com.au](mailto:info@manhattancorp.com.au)  
Web Site: [www.manhattancorp.com.au](http://www.manhattancorp.com.au)

# Appendix 5B

## Mining exploration entity quarterly report

Introduced 1/7/96. Origin: Appendix 8. Amended 1/7/97, 1/7/98, 30/9/2001.

Name of entity

<b>MANHATTAN CORPORATION LIMITED</b> (formerly Uranio Limited)
--

ABN

61 123 156 089
----------------

Quarter ended ("current quarter")

<b>30 June 2009</b>
---------------------

### Consolidated statement of cash flows

	Current quarter \$A'000	Year to date (12 months) \$A'000
<b>Cash flows related to operating activities</b>		
1.1 Receipts from product sales and related debtors	-	-
1.2 Payments for		
(a) exploration and evaluation	(81)	(604)
(b) development	-	-
(c) production	-	-
(d) administration	(244)	(932)
(e) business development	-	(81)
1.3 Dividends received	-	-
1.4 Interest and other items of a similar nature received	10	122
1.5 Interest and other costs of finance paid	-	(87)
1.6 Income taxes paid	-	(1)
1.7 Other – Net GST and other refunds	-	(86)
<b>Net Operating Cash Flows</b>	<b>(315)</b>	<b>(1,669)</b>
<b>Cash flows related to investing activities</b>		
1.8 Payment for purchases of:		
(a)prospects	(154)	(154)
(b)equity investments	-	-
(c) other fixed assets	-	-
1.9 Proceeds from sale of:		
(a)prospects	-	-
(b)equity investments	-	-
(c)other fixed assets	-	-
1.10 Loans from other entities	-	-
1.11 Loans repaid to other entities	(500)	(750)
1.12 Other – Security deposits	-	-
<b>Net investing cash flows</b>	<b>(654)</b>	<b>(904)</b>
1.13 Total operating and investing cash flows (carried forward)	<b>(969)</b>	<b>(2,573)</b>

**Appendix 5B**  
**Manhattan Corporation Limited June Quarterly Report**

1.13	Total operating and investing cash flows (brought forward)	(969)	(2,573)
	<b>Cash flows related to financing activities</b>		
1.14	Proceeds from issues of shares, options, etc.	-	-
1.15	Proceeds from sale of forfeited shares	-	-
1.16	Proceeds from funds held on trust	-	-
1.17	Repayment of borrowings	-	-
1.18	Dividends paid	-	-
1.19	Other (share issue costs)	-	-
	<b>Net financing cash flows</b>	-	-
	<b>Net increase (decrease) in cash held</b>	(969)	(2,573)
1.20	Cash at beginning of quarter/year to date	1,951	3,555
1.21	Exchange rate adjustments to item 1.20	-	-
1.22	<b>Cash at end of quarter</b>	<b>982</b>	<b>982</b>

**Payments to directors of the entity and associates of the directors**

**Payments to related entities of the entity and associates of the related entities**

		Current quarter \$A'000
1.23	Aggregate amount of payments to the parties included in item 1.2	(95)
1.24	Aggregate amount of loans to the parties included in item 1.10	Nil
1.25	Explanation necessary for an understanding of the transactions	

1.2 (d)

- Managing Director salary and superannuation of \$61,312 paid during quarter.
- Non Executive Director fees and superannuation of \$14,987 paid during quarter.
- Payments to director related companies for legal and advisory fees \$18,267.

**Non-cash financing and investing activities**

2.1 Details of financing and investing transactions which have had a material effect on consolidated assets and liabilities but did not involve cash flows

N/A

2.2 Details of outlays made by other entities to establish or increase their share in projects in which the reporting entity has an interest

-

**Financing facilities available**

Add notes as necessary for an understanding of the position.

		Amount available \$A'000	Amount used \$A'000
3.1	Loan Aggregate amount	-	-
3.2	Credit standby arrangements	-	-

+ See chapter 19 for defined terms.

**Estimated cash outflows for next quarter**

	\$A'000
4.1 Exploration & Evaluation	150
4.2 Development	-
<b>Total</b>	<b>150</b>

**Reconciliation of cash**

Reconciliation of cash at the end of the quarter (as shown in the consolidated statement of cash flows) to the related items in the accounts is as follows.	Current quarter \$A'000	Previous quarter \$A'000
5.1 Cash on hand and at bank	6	10
5.2 Deposits at call	976	1,941
5.3 Bank overdraft	-	-
5.4 Other (money held on behalf of shareholders)	-	-
<b>Total: cash at end of quarter (item 1.22)</b>	<b>982</b>	<b>1,951</b>

**Changes in interests in mining tenements (Full MHC Tenement Schedule Attached)**

	Tenement reference	Nature of interest (note (2))	Interest at beginning of quarter	Interest at end of quarter
6.1 Interests in mining tenements relinquished, reduced or lapsed	WA E45/2887	Purchase cancelled	70%	0%
	WA E45/2888	Purchase cancelled	70%	0%
	WA E45/2889	Purchase cancelled	70%	0%
	WA E45/2890	Purchase cancelled	70%	0%
	WA E45/2891	Purchase cancelled	70%	0%
	WA E45/2892	Purchase cancelled	70%	0%
	WA E45/2893	Purchase cancelled	70%	0%
	WA E45/2894	Purchase cancelled	70%	0%
	WA E45/2895	Purchase cancelled	70%	0%
	WA E45/2896	Purchase cancelled	70%	0%
	WA E45/2897	Purchase cancelled	70%	0%
6.2 Interests in mining tenements acquired or increased	WA E39/1140	Interest increased	70%	100%
	WA E39/1141	Interest increased	70%	100%
	WA E39/1142	Interest increased	70%	100%
	WA E39/1143	Interest increased	70%	100%
	WA E39/1144	Interest increased	70%	100%
	WA E80/1735	Interest increased	70%	100%
	WA E80/3275	Interest increased	70%	100%
	WA E80/3817	Interest increased	70%	100%
	WA E80/4081	Interest increased	70%	100%
	SA EL 3288	Interest increased	70%	90%

**Issued and quoted securities at end of current quarter**

*Description includes rate of interest and any redemption or conversion rights together with prices and dates.*

	Total number	Number quoted	Issue price per security (see note 3) (cents)	Amount paid up per security (see note 3) (cents)
7.1 <b>Preference +securities</b> <i>(description)</i>	Nil			
7.2 Changes during quarter (a) Increases through issues (b) Decreases through returns of capital, buy-backs, redemptions				
7.3 <b>+Ordinary securities</b>	39,279,379	34,259,379		
7.4 Changes during quarter (a) Increases through issues (b) Decreases through returns of capital, buy-backs				
7.5 <b>+Convertible debt securities</b> <i>(description)</i>	Nil			
7.6 Changes during quarter (a) Increases through issues (b) Decreases through securities matured, converted				
7.7 <b>Options</b> <i>(description and conversion factor)</i>			<b>Exercise Price</b>	<b>Expiry Date</b>
	5,000,000	Nil	\$0.20	30/06/2010
	3,849,379	Nil	\$0.20	21/01/2012
	1,000,000	Nil	\$0.20	23/06/2013
	1,000,000	Nil	\$0.30	23/06/2013
	1,000,000	Nil	\$0.40	23/06/2013
7.8 Issued during quarter				
7.9 Exercised during quarter				
7.10 Expired during quarter				
7.11 <b>Debentures</b> <i>(totals only)</i>				
7.12 <b>Unsecured notes</b> <i>(totals only)</i>				

+ See chapter 19 for defined terms.

### Compliance statement

- 1 This statement has been prepared under accounting policies which comply with accounting standards as defined in the Corporations Act or other standards acceptable to ASX (see note 4).
- 2 This statement does give a true and fair view of the matters disclosed.



**RS (Sam) Middlemas**  
Company Secretary

**29 July 2009**

### Notes

- 1 The quarterly report provides a basis for informing the market how the entity's activities have been financed for the past quarter and the effect on its cash position. An entity wanting to disclose additional information is encouraged to do so, in a note or notes attached to this report.
- 2 The "Nature of interest" (items 6.1 and 6.2) includes options in respect of interests in mining tenements acquired, exercised or lapsed during the reporting period. If the entity is involved in a joint venture agreement and there are conditions precedent which will change its percentage interest in a mining tenement, it should disclose the change of percentage interest and conditions precedent in the list required for items 6.1 and 6.2.
- 3 **Issued and quoted securities** The issue price and amount paid up is not required in items 7.1 and 7.3 for fully paid securities.
- 4 The definitions in, and provisions of, *AASB 6: Exploration for and Evaluation of Mineral Resources* and *AASB 107: Cash Flow Statements* apply to this report.
- 5 **Accounting Standards** ASX will accept, for example, the use of International Accounting Standards for foreign entities. If the standards used do not address a topic, the Australian standard on that topic (if any) must be complied with.

**MANHATTAN**

MANHATTAN CORPORATION LIMITED

ABN 61 123 156 089

**TENEMENT SCHEDULE  
30 July 2009****WESTERN AUSTRALIA**

Tenement Number	Project	Registered Holder(s)	Manhattan's Interest	Date Granted	Expiry Date	Area	Notes
E39/1140	Ponton	MHC	100%	24 Aug 2006	23 Aug 2011	70 sub blocks	
E39/1141	Ponton	MHC	100%	24 Aug 2006	23 Aug 2011	70 sub blocks	
E39/1142	Ponton	MHC	100%	24 Aug 2006	23 Aug 2011	70 sub blocks	
E39/1143	Ponton	MHC	100%	24 Aug 2006	23 Aug 2011	70 sub blocks	
E39/1144	Ponton	MHC	100%	24 Aug 2006	23 Aug 2011	70 sub blocks	
E28/1523	Ponton	PDN	100%	26 Nov 2008	25 Nov 2013	20 sub blocks	(1)
E28/1898	Ponton	MHC	100%	App	App	64 sub blocks	(2)
E80/1735	Gardner Range	MHC	100%	15 Mar 1994	14 Mar 2010	12 sub blocks	
E80/3275	Gardner Range	MHC	100%	11 Nov 2005	10 Nov 2010	54 sub blocks	
E80/3817	Gardner Range	DYL	100%	23 Oct 2008	22 Oct 2013	70 sub blocks	(3)
E80/4081	Gardner Range	DYL	100%	03 Mar 2009	02 Mar 2014	43 sub blocks	(4)

**SOUTH AUSTRALIA**

Tenement Number	Project	Registered Holder(s)	Manhattan's Interest	Date Granted	Expiry Date	Area	Notes
EL 3288	Siccus	MHC/SRPL	90%	02 Feb 2004	01 Dec 2009	675km <sup>2</sup>	

**QUEENSLAND**

Tenement Number	Project	Registered Holder(s)	Manhattan's Interest	Date Granted	Expiry Date	Area	Notes
EPM17319	Annable South	MRPL	100%	App		4 sub blocks	(5)
EPM17320	Annable North	MRPL	100%	App		16 sub blocks	(5)

**NOTES:**

- (1) Tenement acquired from Paladin Energy Ltd (PDN). To be transferred to MHC 26 November 2009
- (2) Application lodged with DMP on 6 October 2008
- (3) Tenement acquired from Deep Yellow Ltd (DYL). To be transferred to MHC 23 October 2009
- (4) Tenement acquired from Deep Yellow Ltd (DYL). To be transferred to MHC 18 January 2010
- (5) Applications lodged with DME on 1 February 2008 (Annable North & South).

**ABBREVIATIONS:**

<b>E</b>	Exploration Licence WA	<b>DMP</b>	Western Australian Department of Mines and Petroleum
<b>EL</b>	Exploration Permit SA	<b>PIRSA</b>	South Australian Department of Primary Industries and Resources
<b>EPM</b>	Exploration Permit Minerals QLD	<b>DME</b>	Queensland Department of Mines and Energy
<b>km<sup>2</sup></b>	Square kilometre	<b>MRPL</b>	Manhattan Resources Pty Ltd ABN 81 127 373 871
<b>App</b>	Application lodged	<b>MHC</b>	Manhattan Corporation Limited ABN 61 123 156 089
		<b>SRPL</b>	Signature Resources Pty Ltd ABN 20 077 307 012

**AREAS:**

<b>WESTERN AUSTRALIA</b>	<b>1 Sub block = 2.97 km<sup>2</sup> (approx.)</b>
<b>Ponton Project Area:</b> 434 sub blocks	<b>Total area: 1,300km<sup>2</sup></b>
<b>Gardner Project Area:</b> 179 sub blocks	<b>Total area: 550km<sup>2</sup></b>
<b>SOUTH AUSTRALIA</b>	
<b>Siccus Project Area:</b>	<b>Total area: 675km<sup>2</sup></b>
<b>QUEENSLAND</b>	<b>1 Sub block = 3.20km<sup>2</sup> (approx.)</b>
<b>Annable Project Area:</b> 20 sub blocks	<b>Total area: 65km<sup>2</sup></b>